

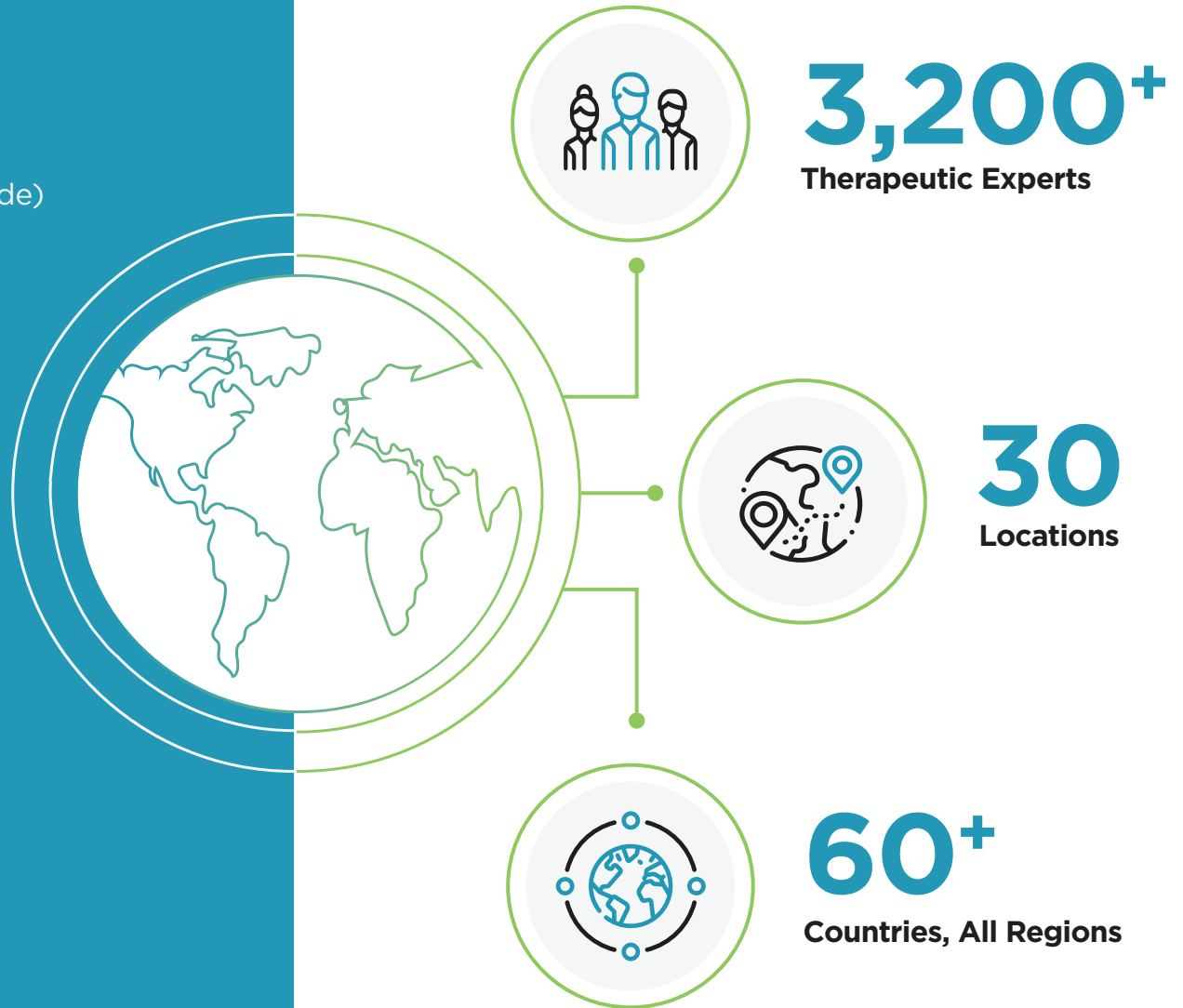


**Clinical research
isn't a straight path.**
Let's navigate it together.

Who We Are

Worldwide Clinical Trials (Worldwide) is a leading full-service global contract research organization (CRO) that works in partnership with biotechnology and pharmaceutical companies to create customized solutions that advance new medications – from discovery to reality.

Anchored in our company's scientific heritage, we are therapeutically focused on cardiovascular, metabolic, neuroscience, oncology, and rare diseases. Our deep therapeutic knowledge enables us to develop flexible plans and quickly solve problems for our customers.



Comprehensive clinical development services across all phases

Late Phase II-III Clinical Trials

Early Phase I Clinical Trials

- Phase I clinical trials
- Bioequivalence
- Clinical research unit (San Antonio, TX)
- Pharmacokinetics
- Pharmacodynamics

- Phase IIA-III clinical trials
- Feasibility/protocol development
- Biostatistics
- Clinical monitoring & site management
- Medical monitoring
- Data management
- Drug & supply depots
- Drug safety & pharmacovigilance
- Medical writing
- Method development/validation
- Patient recruitment/retention
- Project management
- Quality assurance
- Rater services
- Regulatory affairs

Late Phase III - IV Clinical Trials

- Phase III-IV clinical trials
- Drug safety & pharmacovigilance
- Outcomes, epidemiology & risk management
- Registries & observational studies

Bioanalytical Services

- Bioanalytical lab (Austin, TX)
- AME services
- Assay method search
- LC/MS/MS
- Protein binding

Worldwide Evidence™

- Real-world evidence
- Evidence strategy & planning
- Observational studies / patient registry services
- Post-approval safety studies



Cardiovascular



Metabolic



Neuroscience



Oncology



Rare Disease





What sets us apart?

Three qualities drive everything we do.

- ✓ Accessible partners.
- ✓ Shared commitment.
- ✓ Personalized for you.

See what Worldwide Clinical Trials can do for you.

For more information, visit www.worldwide.com or connect with us on [LinkedIn](#).